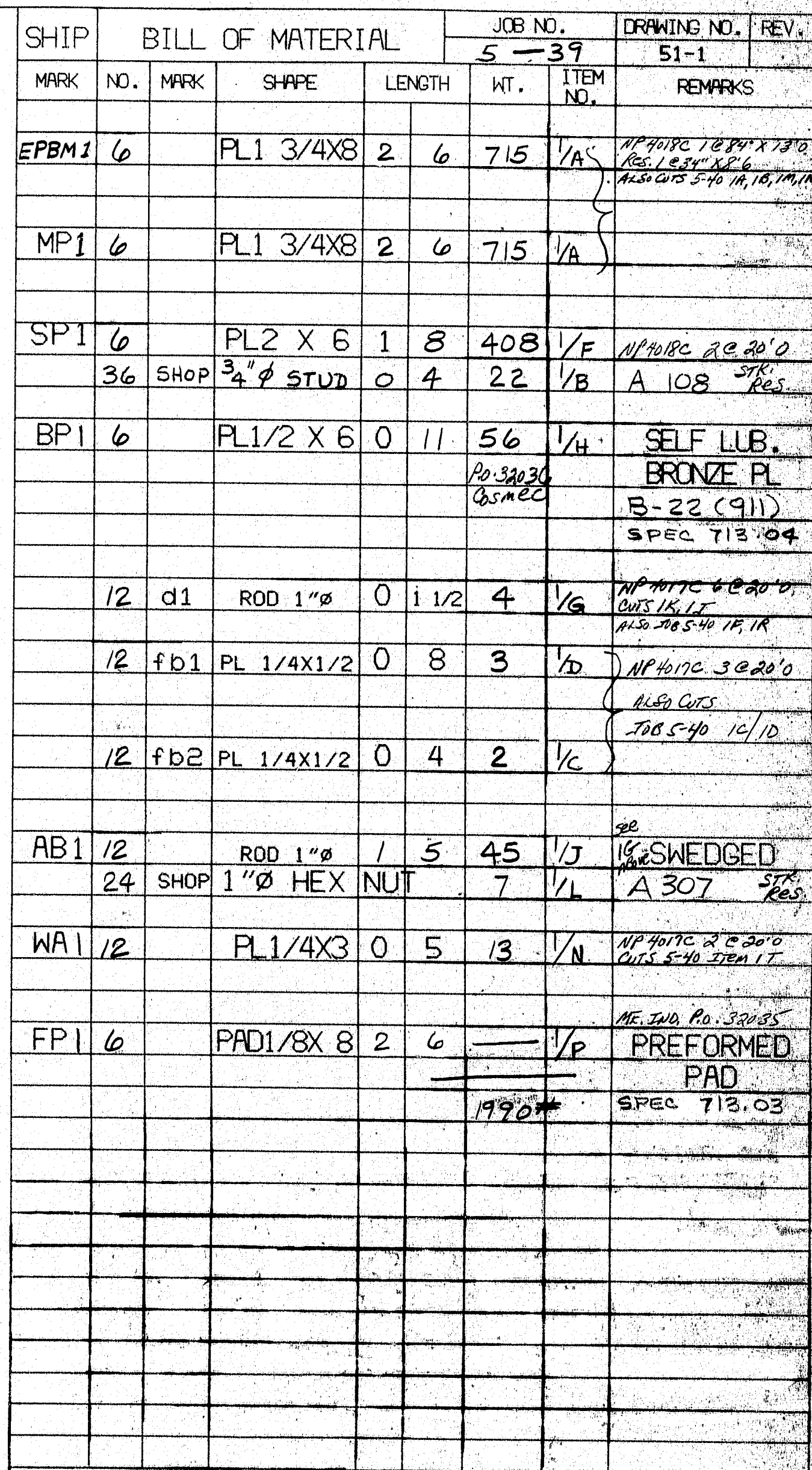



IT. NO. 504.7002	BR. NO. —	PROJ. NO. I-295-3(102)50
APPROVED: 2-27-86		
3	1-7-86	APP.
8	3-6-86	FAB.
25/10	3-5-86	F&E.
DR16	5-16-86	MDOT
Bancroft & Martin Inc.		
South Portland, Maine 04106		
JOB: I-295 PORTLAND BRIDGE OVER CANADIAN NATIONAL RAILWAY		
CUSTOMER: CALLAHAN BROS.		
DESIGNER: STATE OF MAINE, DEPT. OF TRANS.		
REV. Δ	ORDER NO.	JOB NO.
CHECKED 12-26-85 LT		5-39
DRAWN 12-10-85 FK		E-1
		△

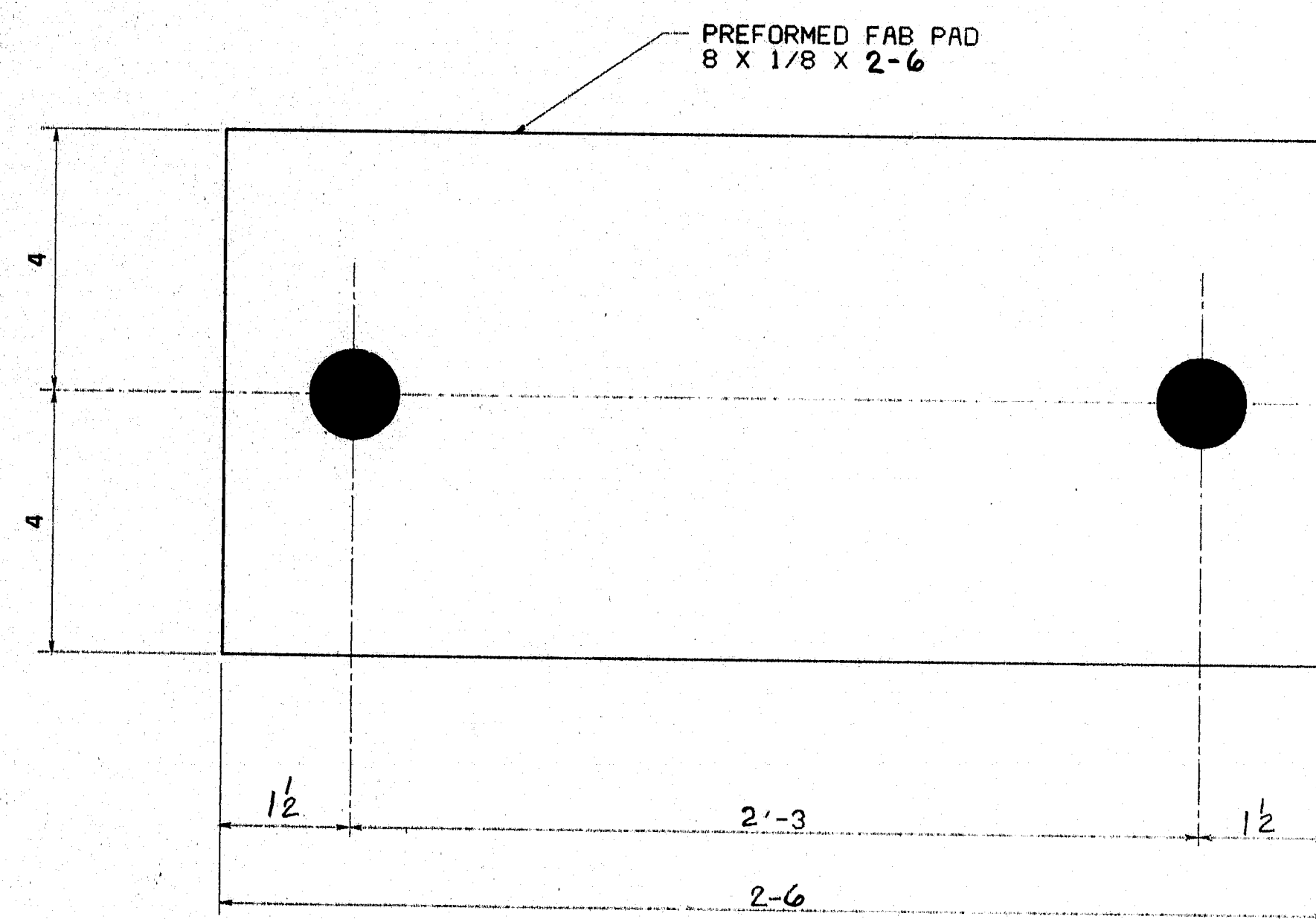
R95-55



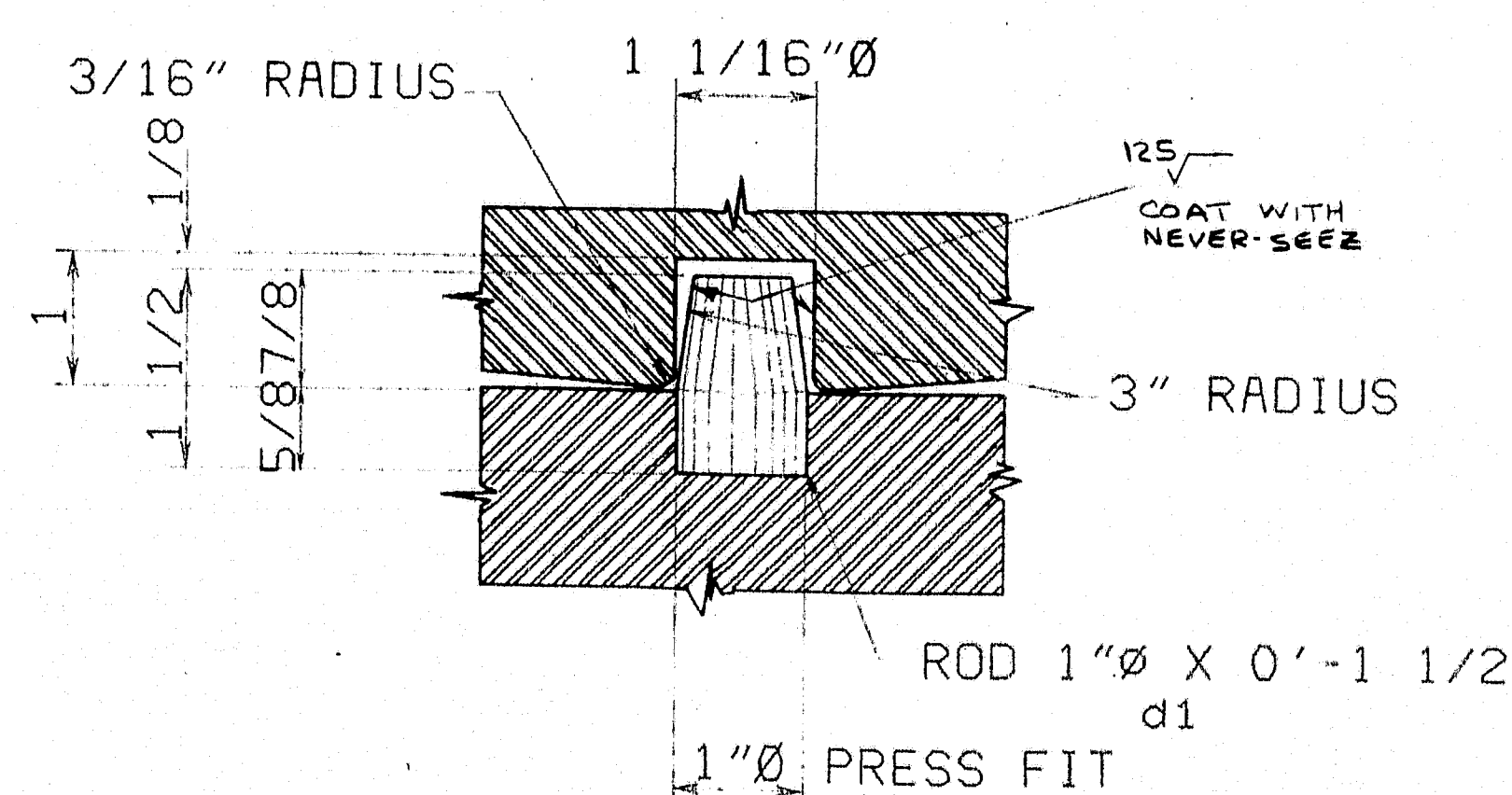
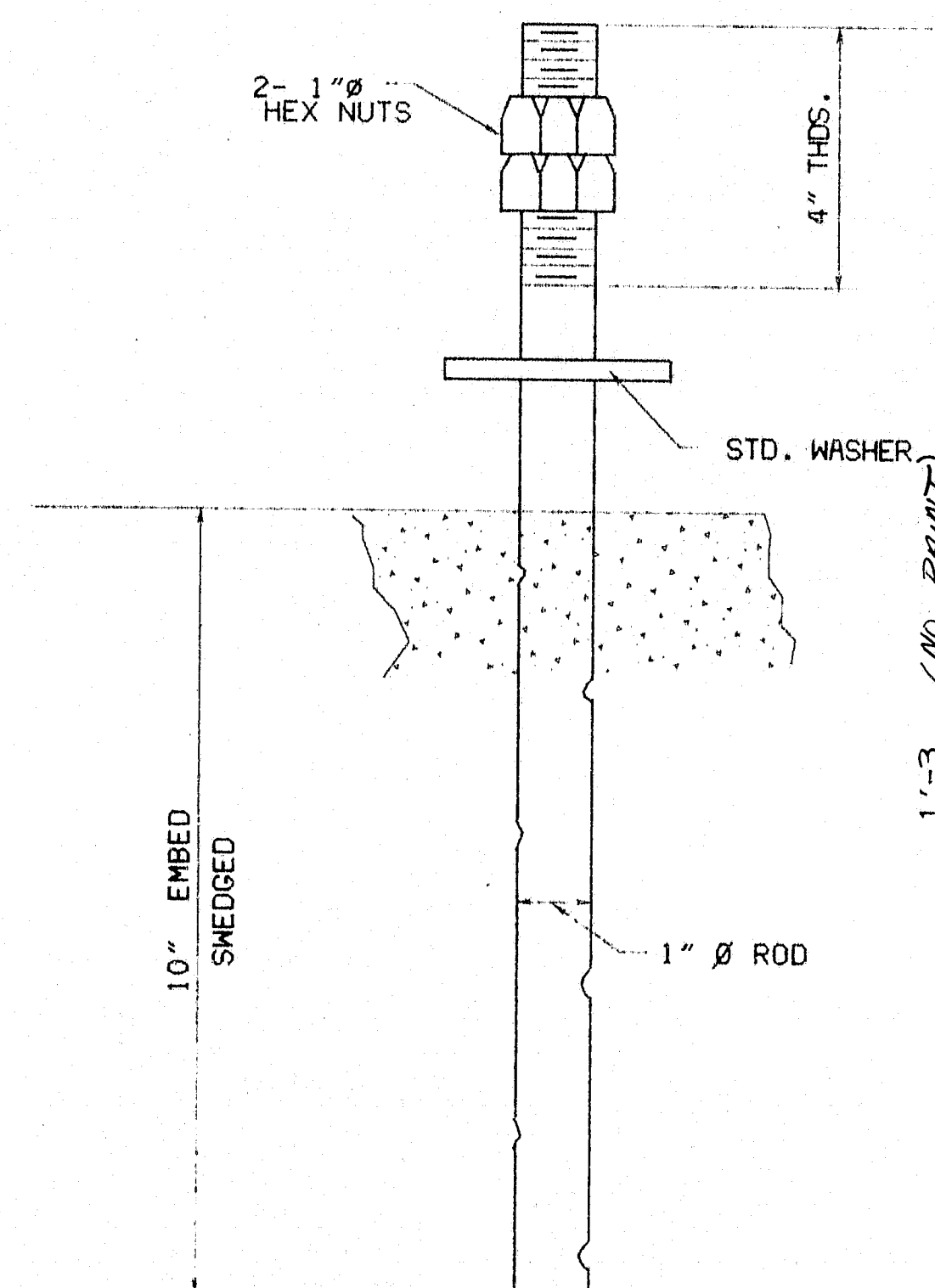


ITEM NO. 504,2002		PROJECT NO. 156-2953/02/50	
STEEL: ASTM A 36 (UN) WELDING ELECTRODE: SEE WELDING PROCEDURES SHOP CONN.: WELDED FIELD CONN.: BOLTED HOLES: AS NOTED PAINT: SPECIAL PAINT: LEAD SILICO CHROMATE ORANGE 4 MILS WET. SPECIAL CLEANING: SSPC - SP6 BEFORE MACHINING			
BEARING PEDESTAL DETAILS -EPBM			
APP'D 1-10-86		 <b>BANCROFT &amp; MARTIN INC.</b> 27 MAIN STREET TEL. 207-799-8571 SO. PORTLAND, MAINE 04106	
FRINT DIST.			
3	11-27-85	APP.	
3	1-5-86	FAB.	
23	1-13-86	F&F	
ORIG	5-16-86	MDST	
		PROJECT: BRIDGE OVER CNR	
		STREET: PORTLAND MAINE	
		CITY:	
		CUSTOMER: CALLAHAN BROS.	
		DESIGNER: WILDER SMITH & Assoc.	
CM	11-27-85	CHKD	
MS	11-25-85	DRAWN	
ORDER NO.		JOB NO.	DRAWING NO.
		5-39	51-1
			REV. NO.





AT PIER #2  
BEAMS 1L, 2L, 3L, 15, 16, 17



ANCHOR BOLT AB2  
12 - REQ'D

R95-57

SHIP BILL OF MATERIAL					JOB NO.	DRAWING NO.		REV.
					5-39	51-2		
MARK	NO.	MARK	SHAPE	LENGTH	WT.	ITEM NO.	REMARKS	
FPBM1	6		PL 2 X 8	2	6	817	1/E	NP 10 RC 1 C 20 0
SP2	6		PL 2 X 6	1	8	408	1/F	NP 10 RC 2 C 20 0
	36	SHOP	3/4" STD	0	4	22	1/B	A 108 <sup>STK.</sup> RES.
	12	d1	ROD 1"Ø	0	1 1/2	4	1/G	NP 10 RC 6 C 20 0 15 1/16 60. GIL. 5-10 1/2 1/8
AB2	12		ROD 1"Ø	1	3	40	1/K	OF 1/8 N.B. SWEDGED
	24	SHOP	1" HEX NUTS			7	1/L	A 307 <sup>STK.</sup> RES.
FIELD	12		1"Ø STD. WASHER			2	1/M	A 307 <sup>STK.</sup> RES.
FP2	6		PAD 8 X 1/8	2	6		1/P	ME. IND. PD. 325 3/4 PREFORMED PAD SPEC 713.03
								1300*

ITEM NO. 504.7002

PROJECT NO. 16-245-3/10250

STEEL: ASTM A36 (UN)  
 WELDING ELECTRODE: NONE  
 SHOP CONN.: NONE  
 FIELD CONN.: BOLTED  
 HOLES: AS NOTED  
 PAINT:  
 SPECIAL PAINT: LEAD SILICO CHROMATE ORANGE 4 MILS WFT.  
 SPECIAL CLEANING: SSPC-SP6 PRIOR TO MACHINING

APPRO'D 1-10-86

PRINT DIST.

3 11-27-85 APP.

8 1-15-86 FAB.

25 1-13-86 F&F

0216 5-16-86 MDO

B

J

BANCROFT & MARTIN INC.

27 MAIN STREET TEL. 207-798-8571

SO. PORTLAND, MAINE 04106

PROJECT: BRIDGE OVER CNR

STREET: PORTLAND, MAINE

CITY:

CUSTOMER: CALLAHAN BROS.

DESIGNER: WILBER SMITH & ASSOC.

JCM

MS

11-27-85

11-25-85

CHKD

DRAWN

ORDER NO.

JOB NO.

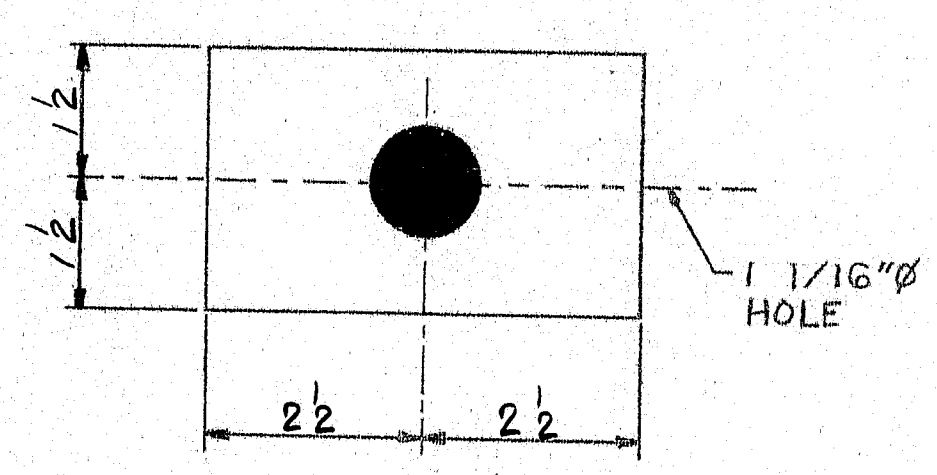
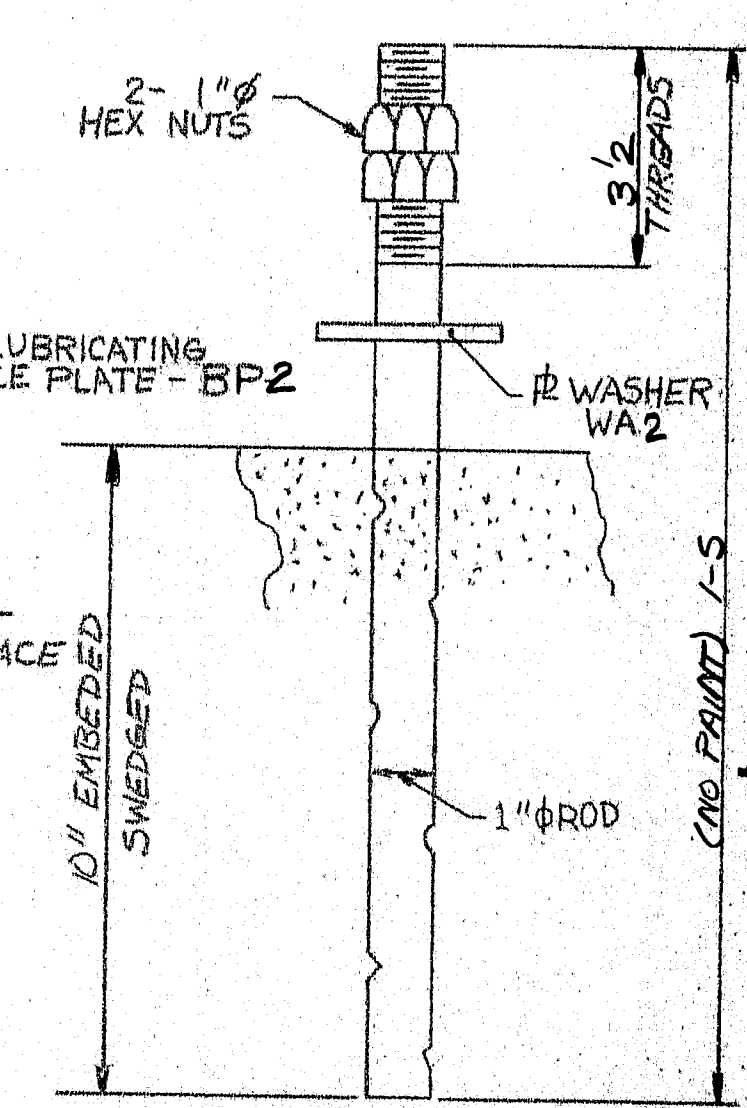
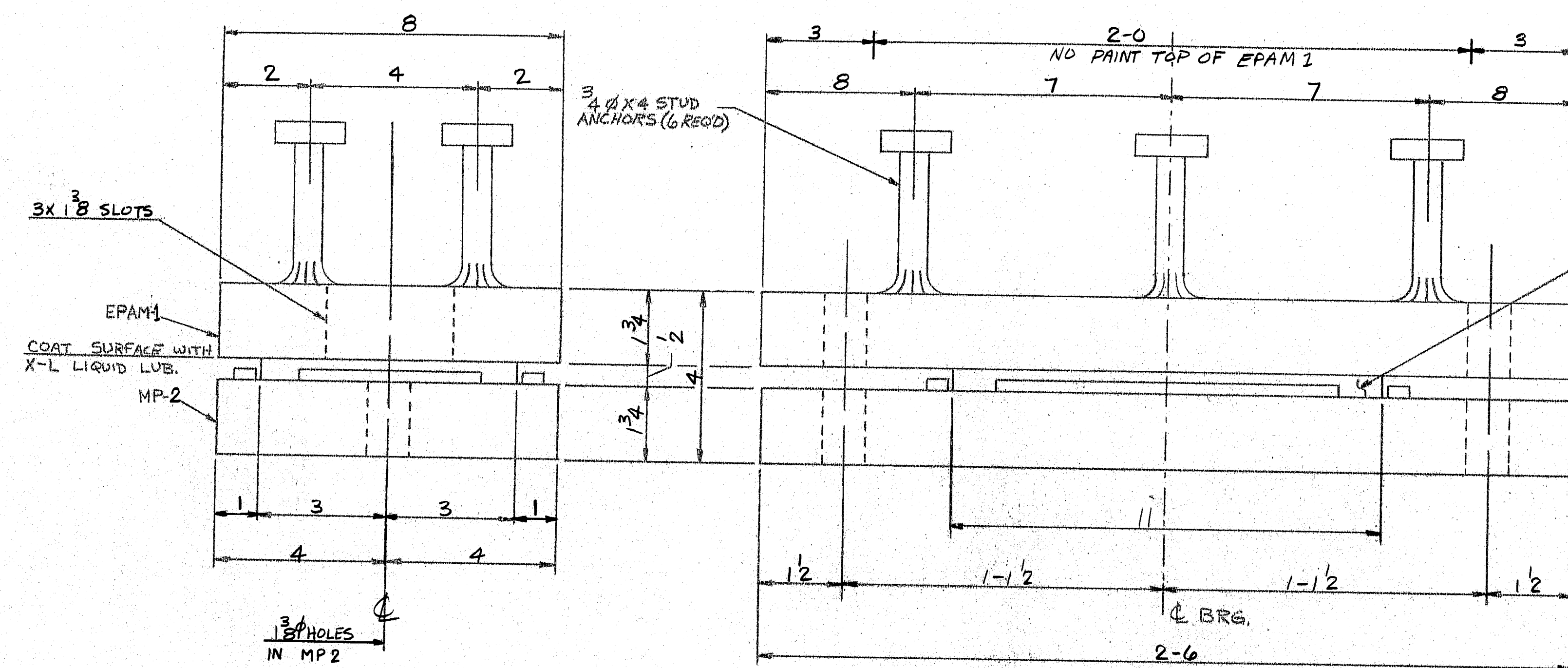
DRAWING NO.

REV. NO.

5-39

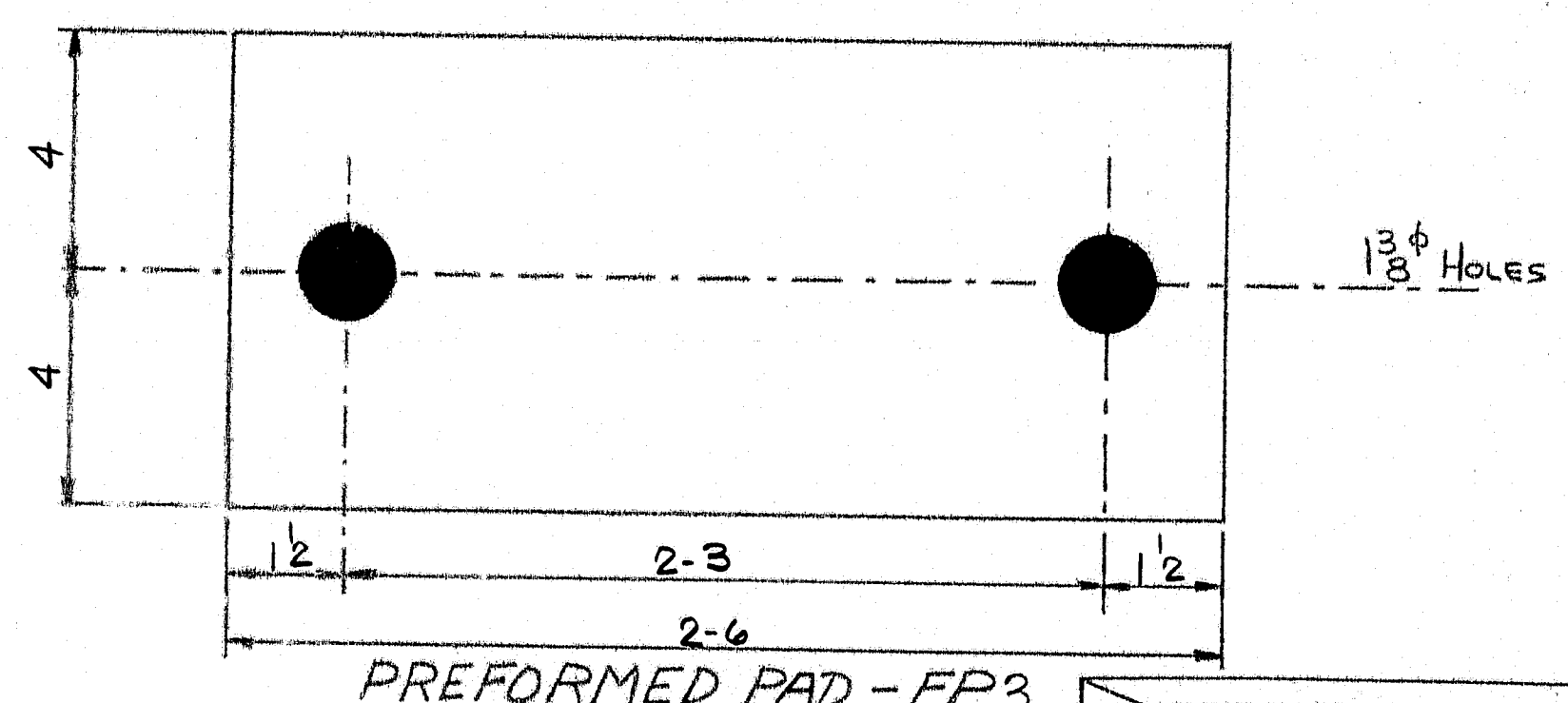
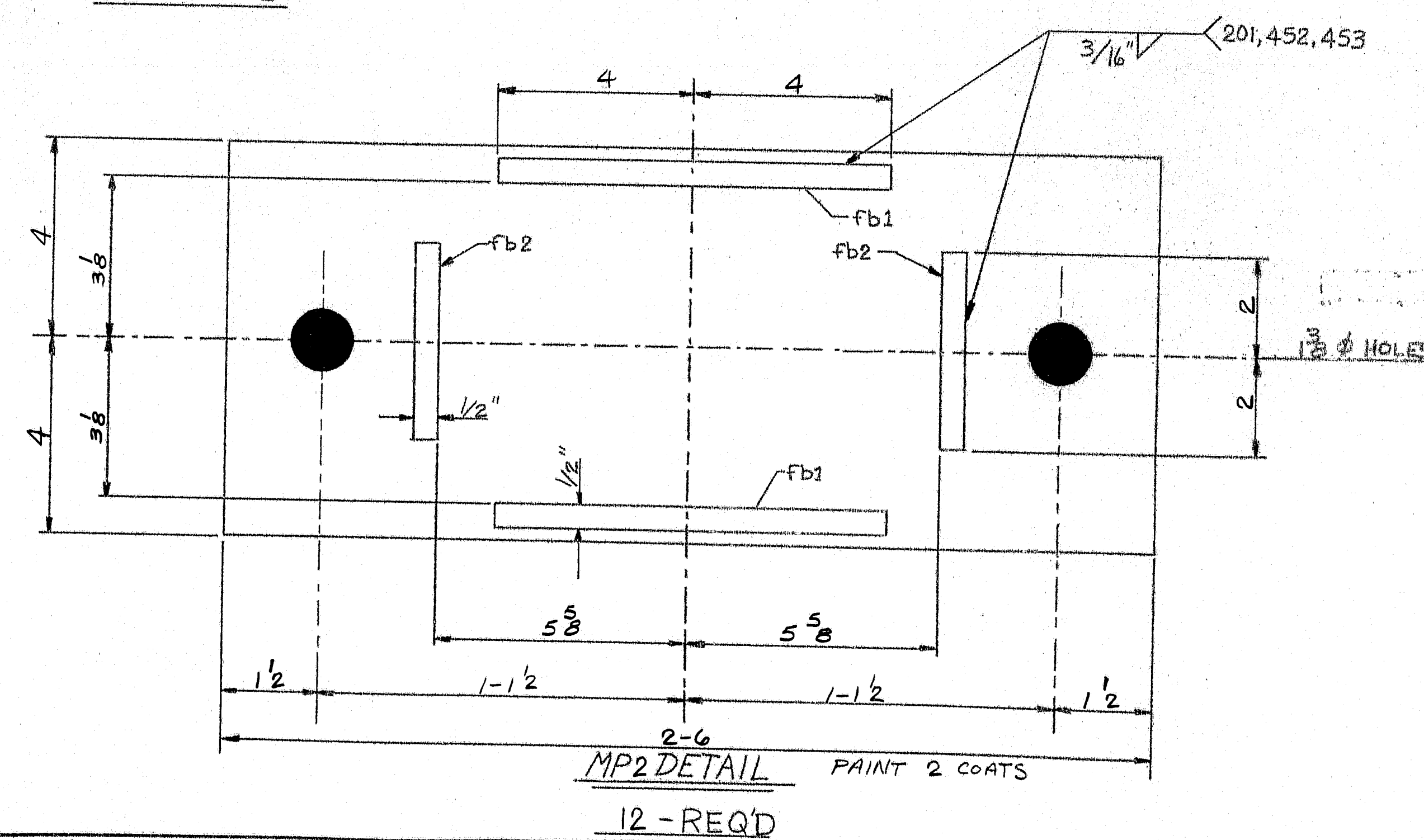
51-2





**EXPANSION PEDESTAL ASSEMBLY**  
**EPAM1 - 12 - REQ'D**

AT ABUTMENTS 1 & 2  
 BEAMS 1L, 2L, 3L, 15, 16, 17.



**R95-58**

SHIP		BILL OF MATERIAL				JOB NO. 5-39		DRAWING NO. 51-3		REV.
MARK	NO.	MARK	SHAPE	LENGTH		ITEM NO.	WT.	REMARKS		

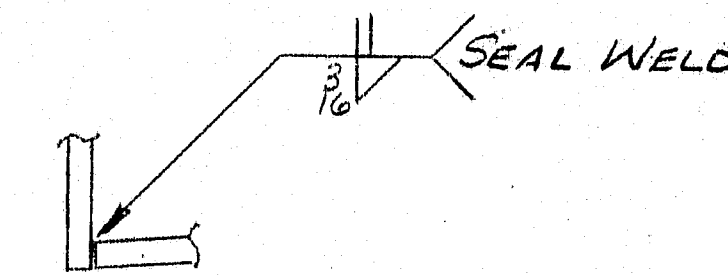
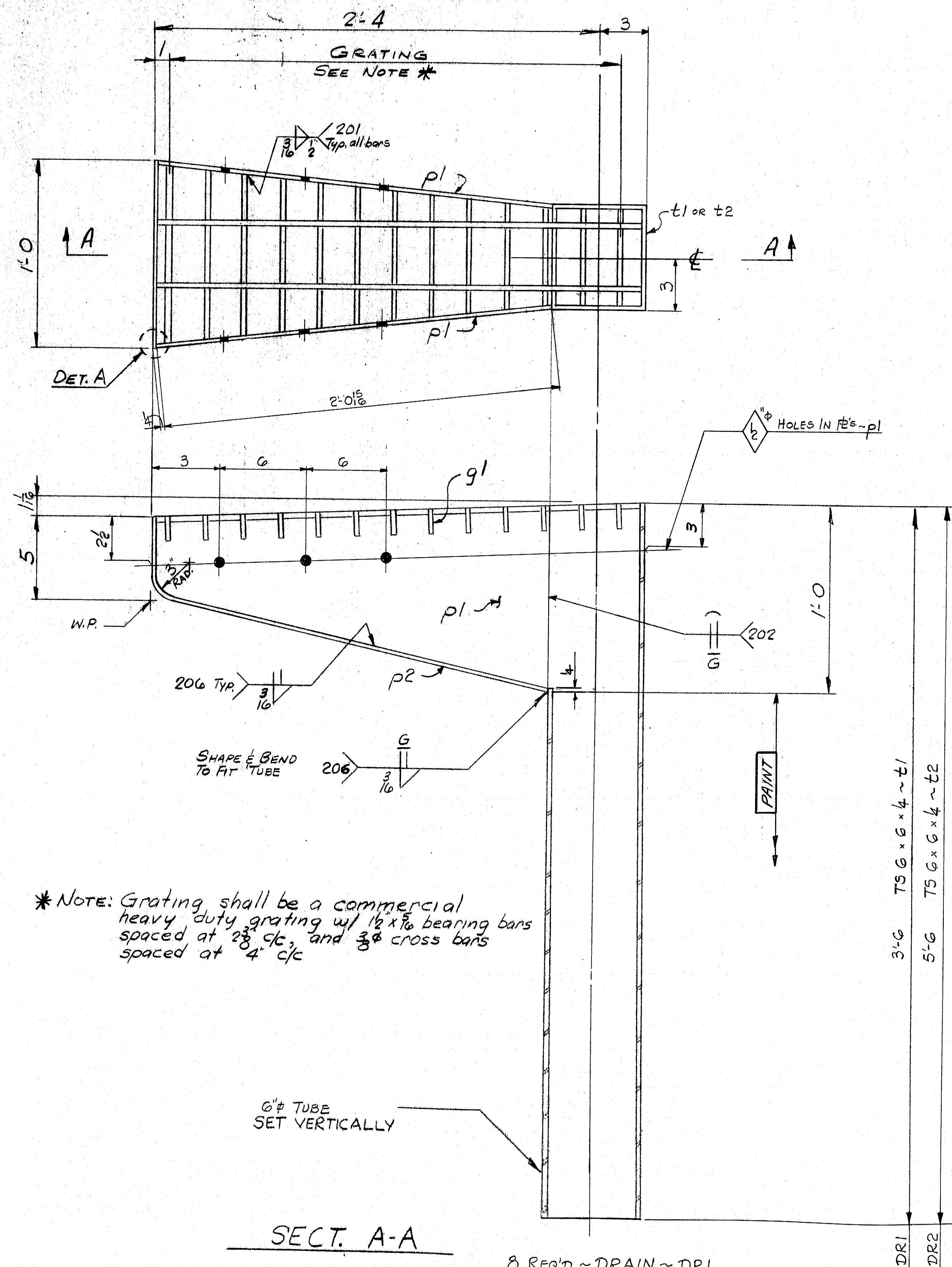






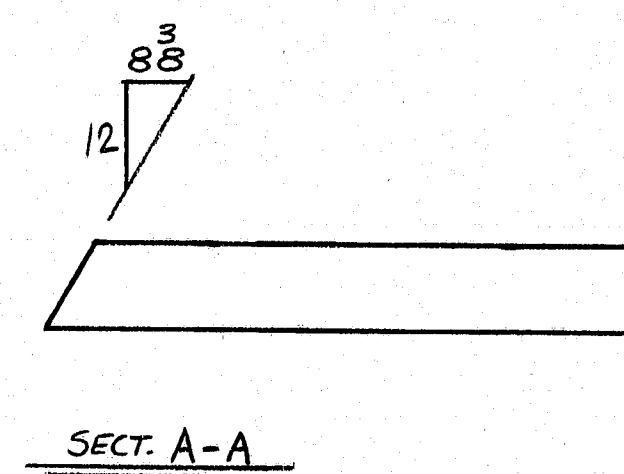
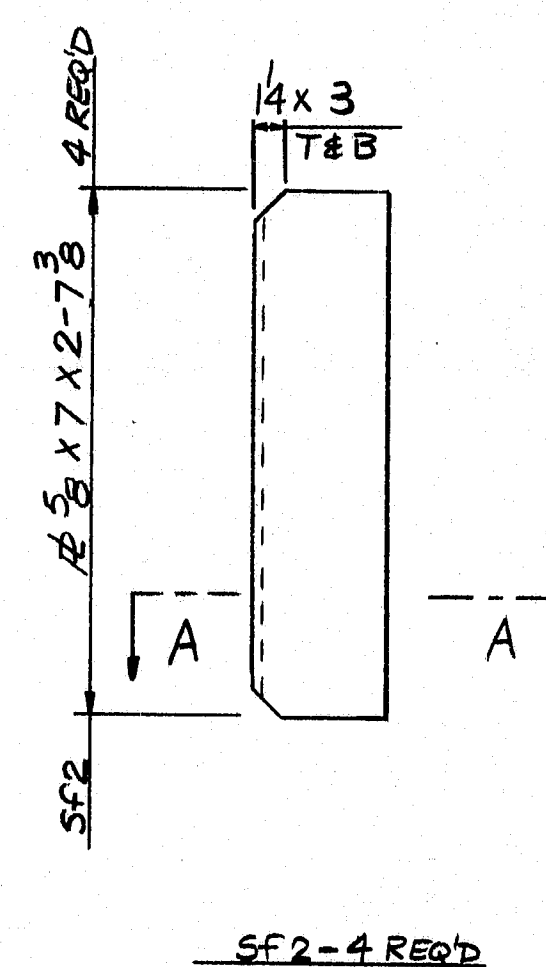
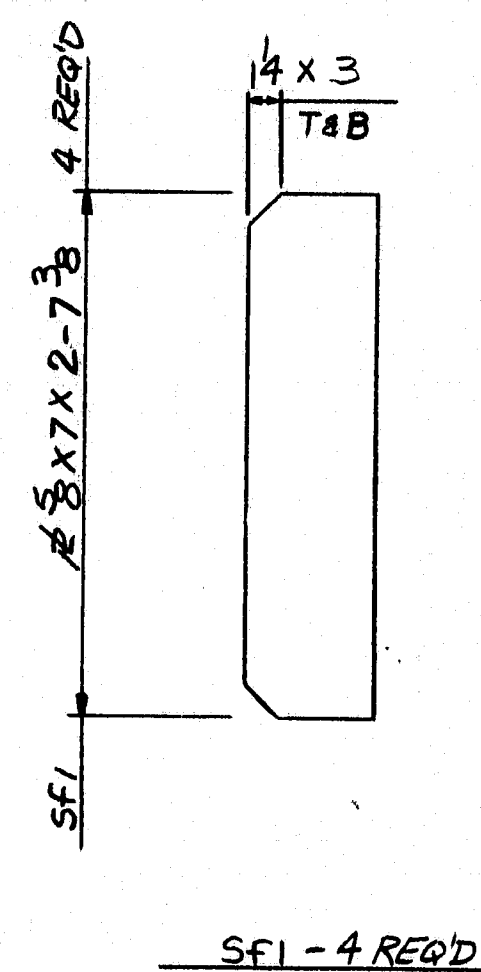
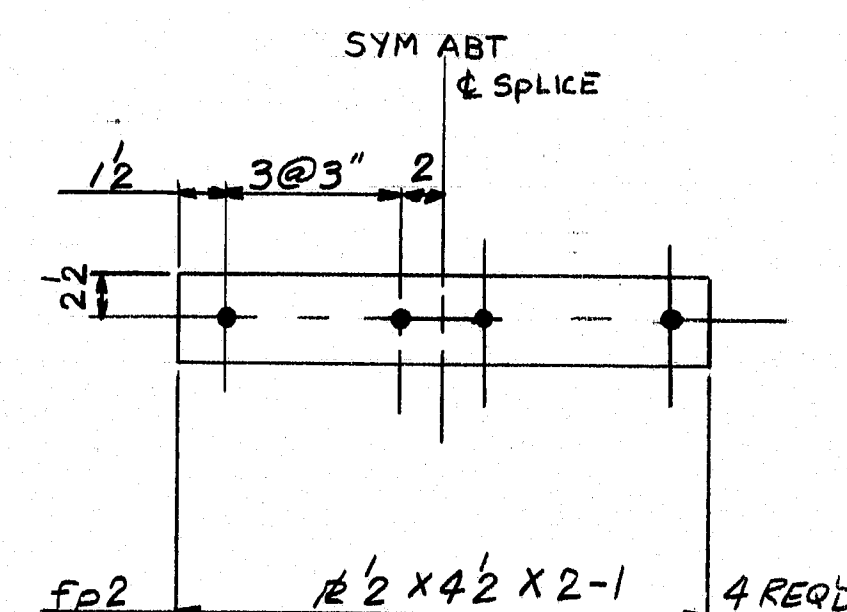
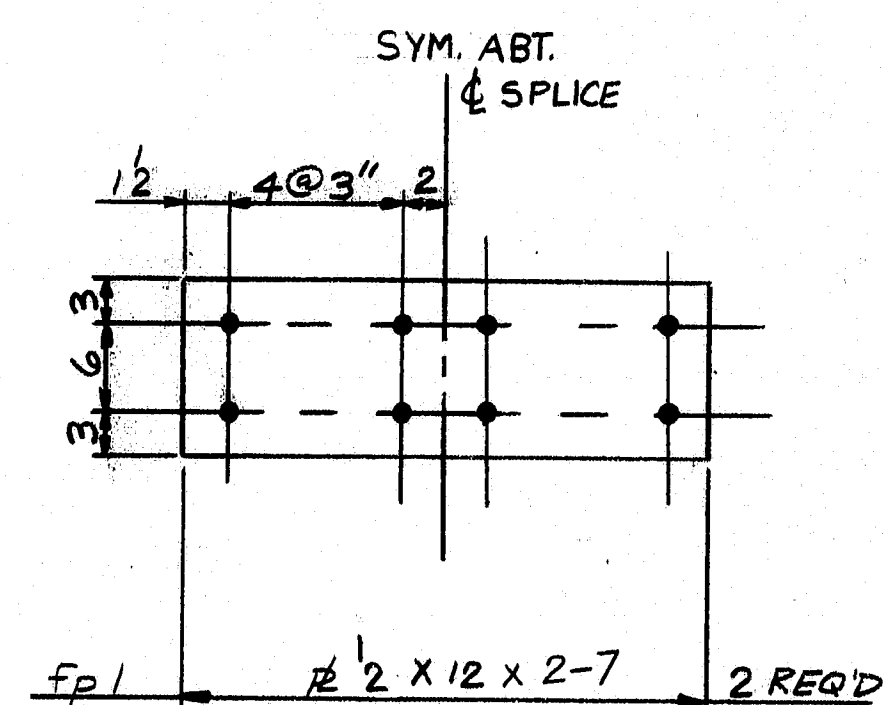
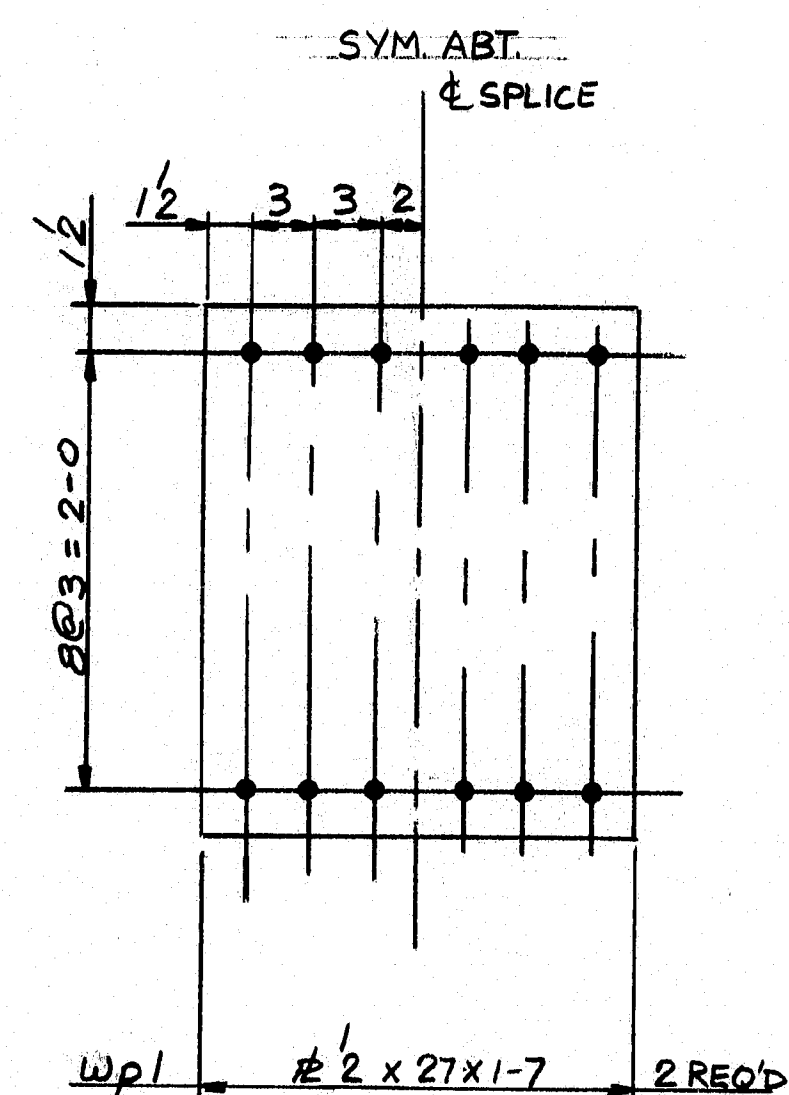






SHIP		BILL OF MATERIAL		JOB NO.		DRAWING NO.		REV.
				5-39		59-1		
MARK	NO.	MARK	SHAPE	LENGTH	WT.	WT.	WT.	REMARKS
DR1	8		ASS'Y	-	-			
DR2	8		ASS'Y	-	-			
	8	t1	TS 6 x 6 x 4	3	6	18.5	533	ASB 1001 OR ASB 1000 (GR. A) DR1
	8	t2	TS 6 x 6 x 4	5	6	18.5	837	DR2
	32	p1	R 4 x 12	2	0.15	1.2	679	L.O. CUT
	16	p2	R 4 x 12	2	0.15	1.2	408	L.O. BEND
	16	g1	GRATING 12x16	2	7	18.5	464	12x16 BEARING BARS 28" C/C

R95-61



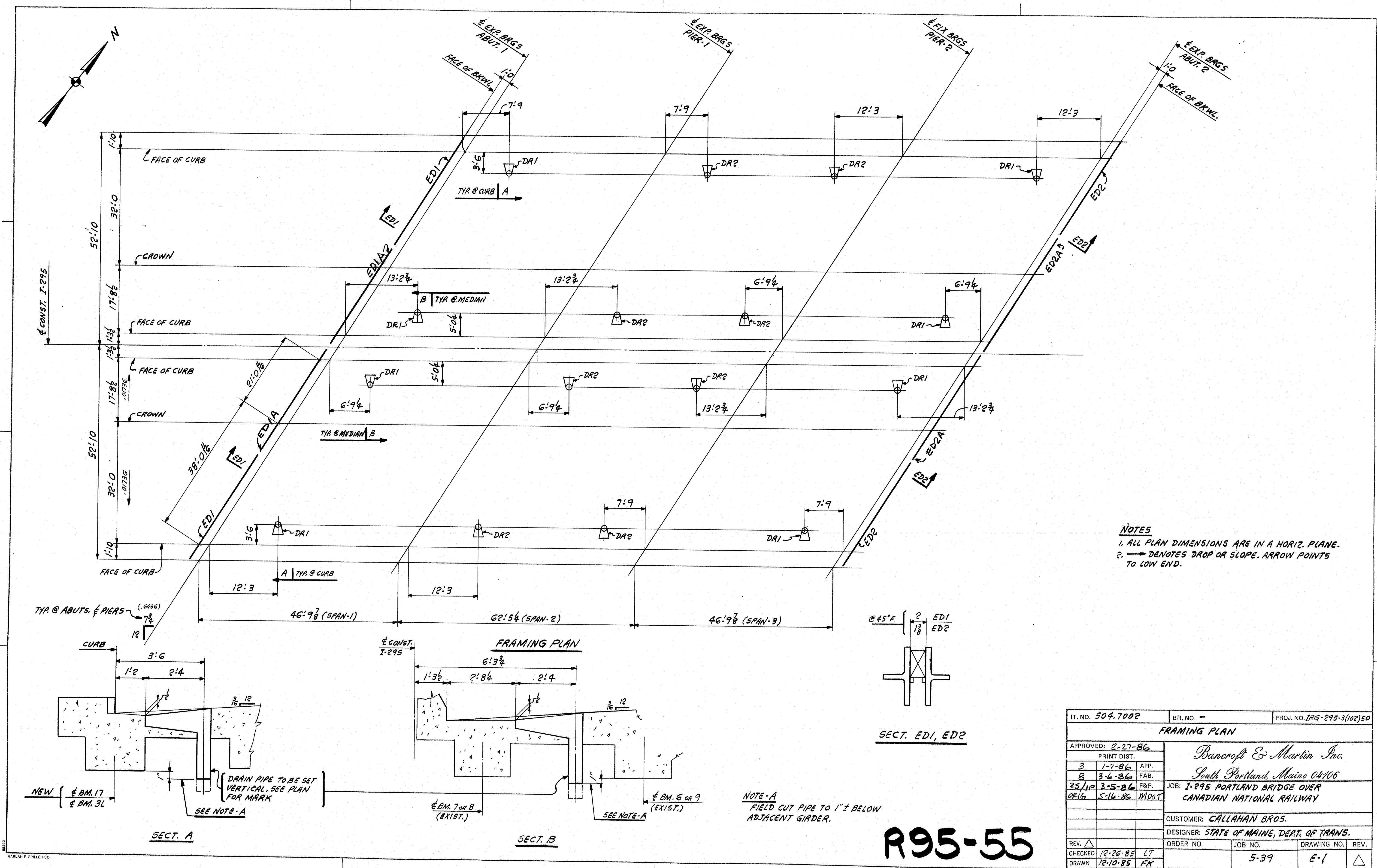
# FIELD NOTES

1. SPLICE HOLES FOR MK. END OF BEAM TO BE FIELD DRILLED USING EXISTING SPLICE PLATES AS TEMPLATE.
2. SIGN SUPPORT CONNECTION PLATES TO BE PLAIN - FIELD TO SUPPLY CONNECTION.
3. DIAPHRAGM CONNECTION PLATE TO BE PLAIN - FIELD TO SUPPLY CONNECTION.
4. ALL HOLES TO BE SUBPUNCHED & REAMED OR DRILLED FROM SOLID

IT. NO.	BR. NO.	PROJ. NO. BH-0750 (4)
APPROVED: 1-8-86	<p>Bancroft &amp; Martin Inc.</p> <p>South Portland, Maine 04106</p> <p>JOB: WEST BROADWAY BRIDGE</p> <p>SO. PORTLAND, MAINE</p> <p>CUSTOMER: CALLAHAN BROS.</p> <p>DESIGNER: MAINE DEPT. OF TRANS.</p>	
PRINT DIST.		
3 12-5-85 APP.		
8 1-13-86 FAB.		
25 1-8-86 F&F.		
REV. Δ	ORDER NO.	JOB NO.
CHECKED 11-27-85 JCM	DRAWING NO.	REV.
DRAWN 11-22-85 M.S.	WX-2662	55-1 Δ

R95-62

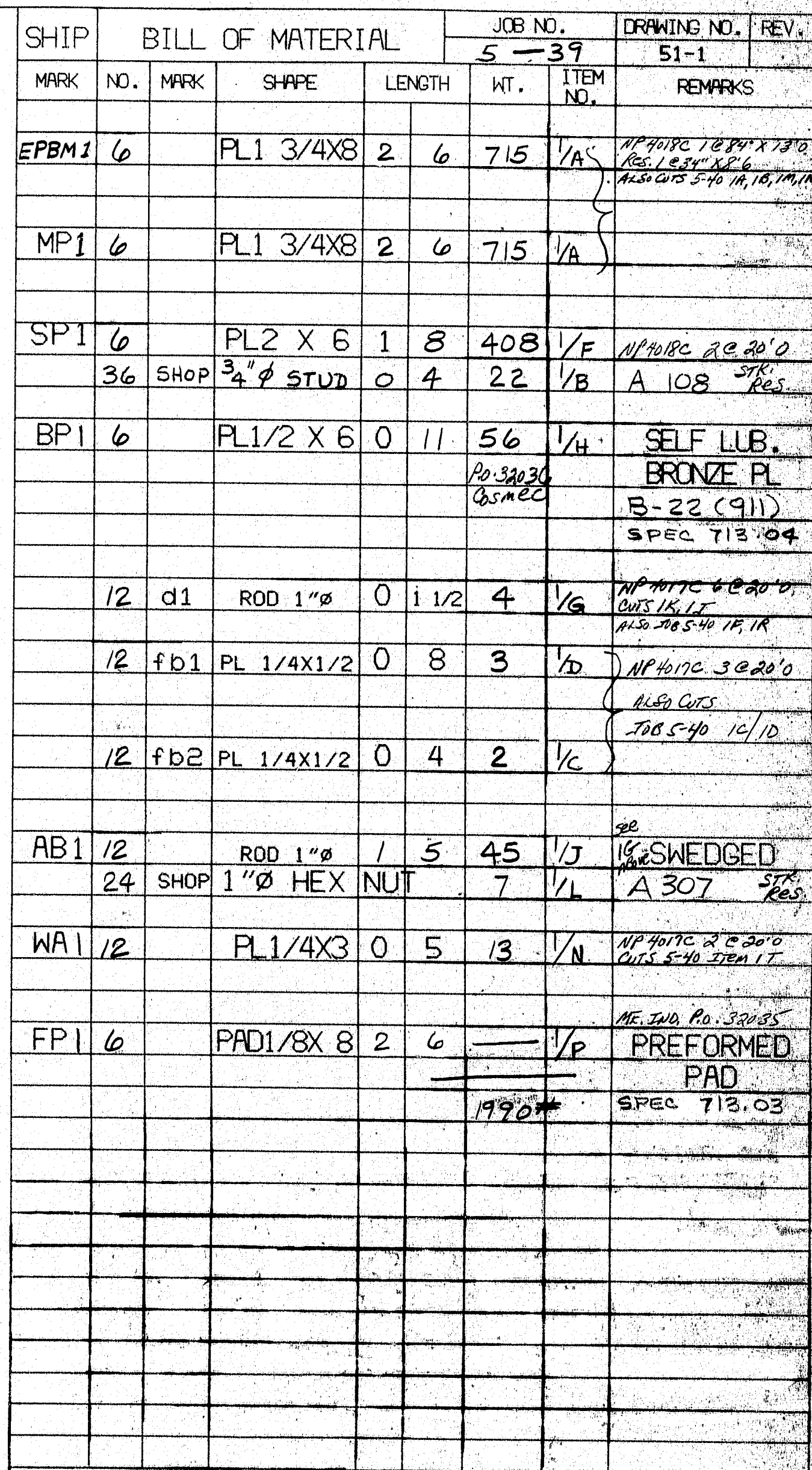





IT. NO. 504.7002	BR. NO. —	PROJ. NO. I-295-3(102)50
FRAMING PLAN		
APPROVED: 2-27-86	Bancroft & Martin Inc.	
PRINT DIST.	South Portland, Maine 04106	
3 1-7-86 APP.	JOB: I-295 PORTLAND BRIDGE OVER	
8 3-6-86 FAB.	CANADIAN NATIONAL RAILWAY	
25/10 3-5-86 F&E.	CUSTOMER: CALLAHAN BROS.	
DR/G 5-16-86 MDO/T	DESIGNER: STATE OF MAINE, DEPT. OF TRANS.	
REV. Δ	ORDER NO.	JOB NO.
CHECKED 12-26-85 LT		
DRAWN 12-10-85 FK		
	5-39	E-1
		△

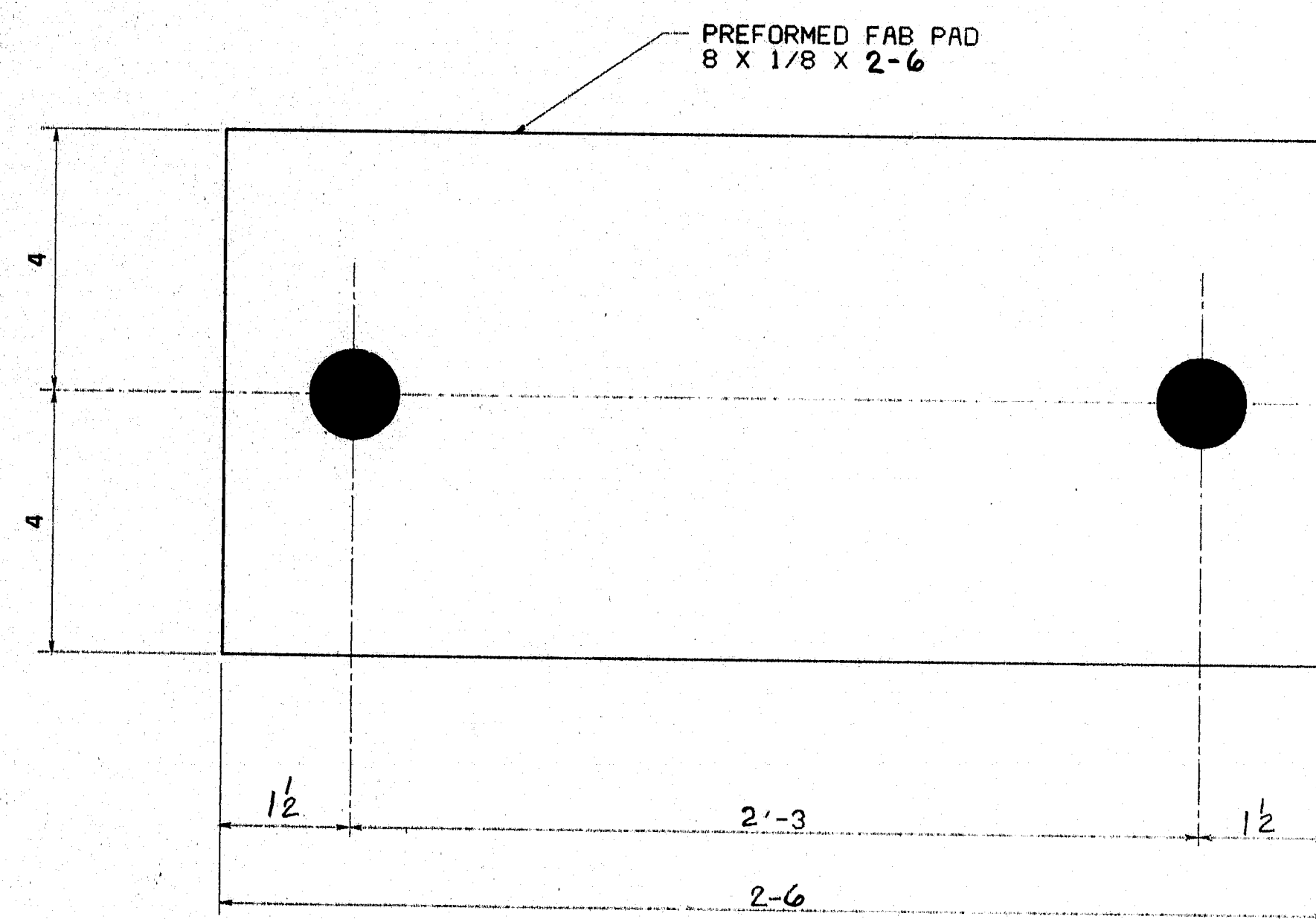
R95-55



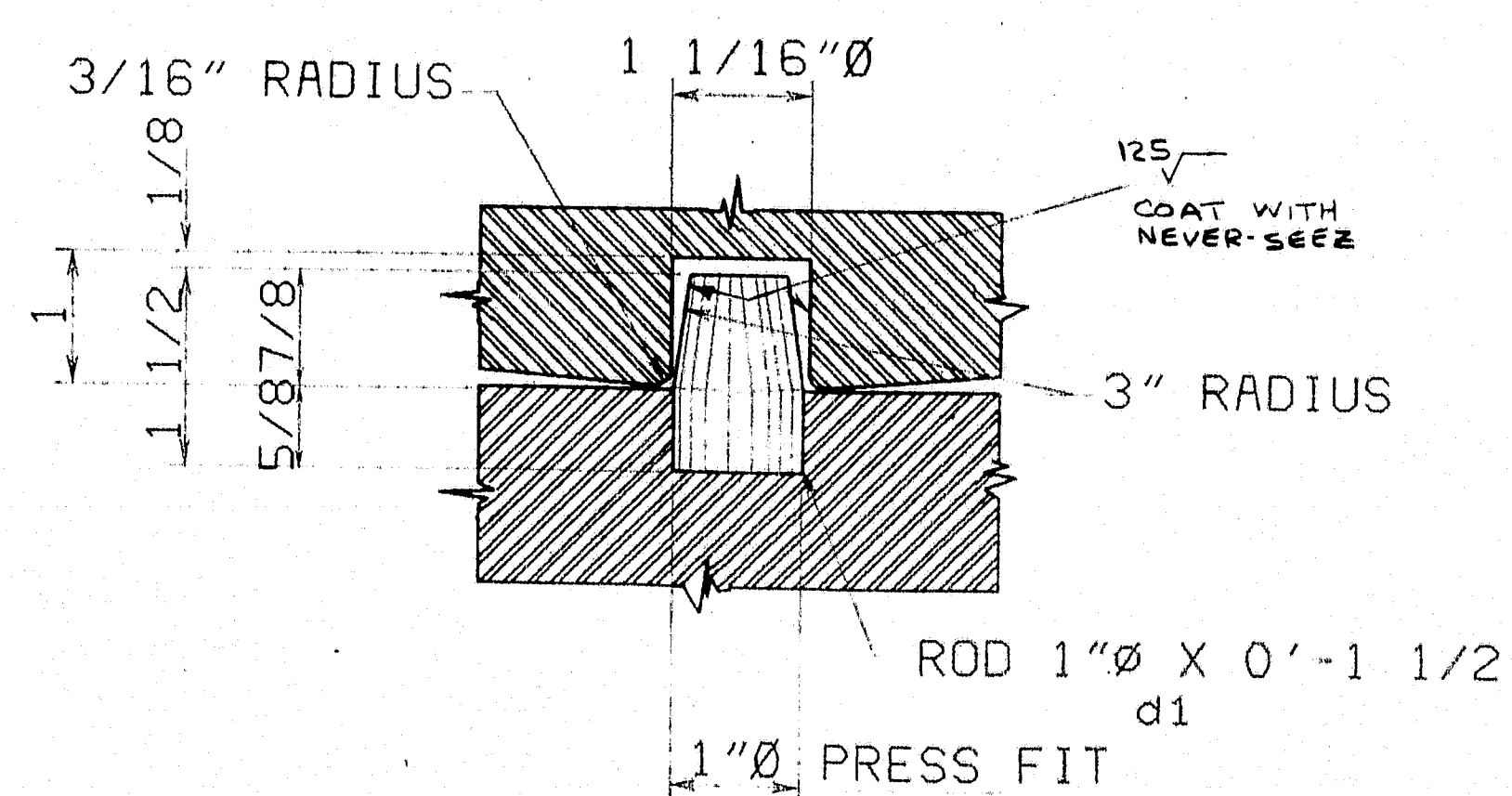
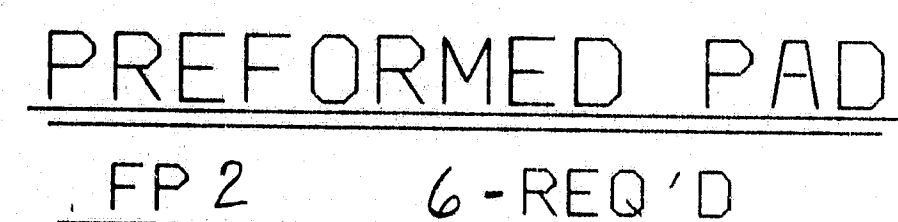


ITEM NO. 504,200		PROJECT NO. 156-245-3002	
STEEL: ASTM A 36 (UN) WELDING ELECTRODE: SEE WELDING PROCEDURES SHOP CONN.: WELDED FIELD CONN.: BOLTED HOLES: AS NOTED PAINT: SPECIAL PAINT: LEAD SILICO CHROMATE ORANGE 4 MILS WET. SPECIAL CLEANING: SSPC - SP6 BEFORE MACHINING			
BEARING PEDESTAL DETAILS -EPBM			
APP'D 1-10-86		 <b>BANCROFT &amp; MARTIN INC.</b> 27 MAIN STREET TEL. 207-799-8571 SO. PORTLAND, MAINE 04106	
FRINT DIST.			
3	11-27-85	APP.	PROJECT: BRIDGE OVER CNR STREET: PORTLAND MAINE CITY: CUSTOMER: CALLAHAN BROS. DESIGNER: WILDER SMITH & Assoc.
3	1-5-86	FAB.	
23	1-13-86	F&F	
ORIG	5-16-86	MDST	
CM	11-27-85	CHKD	ORDER NO. JOB NO. DRAWING NO. REV. NO. 5-39 51-1
MS	11-25-85	DRAWN	





AT PIER #2  
BEAMS 1L, 2L, 3L, 15, 16, 17 . FPBM1 6-REQ'D



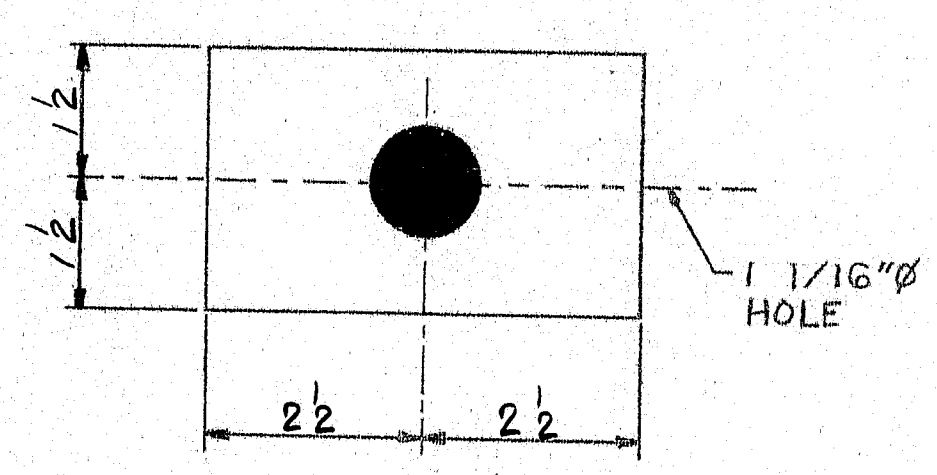
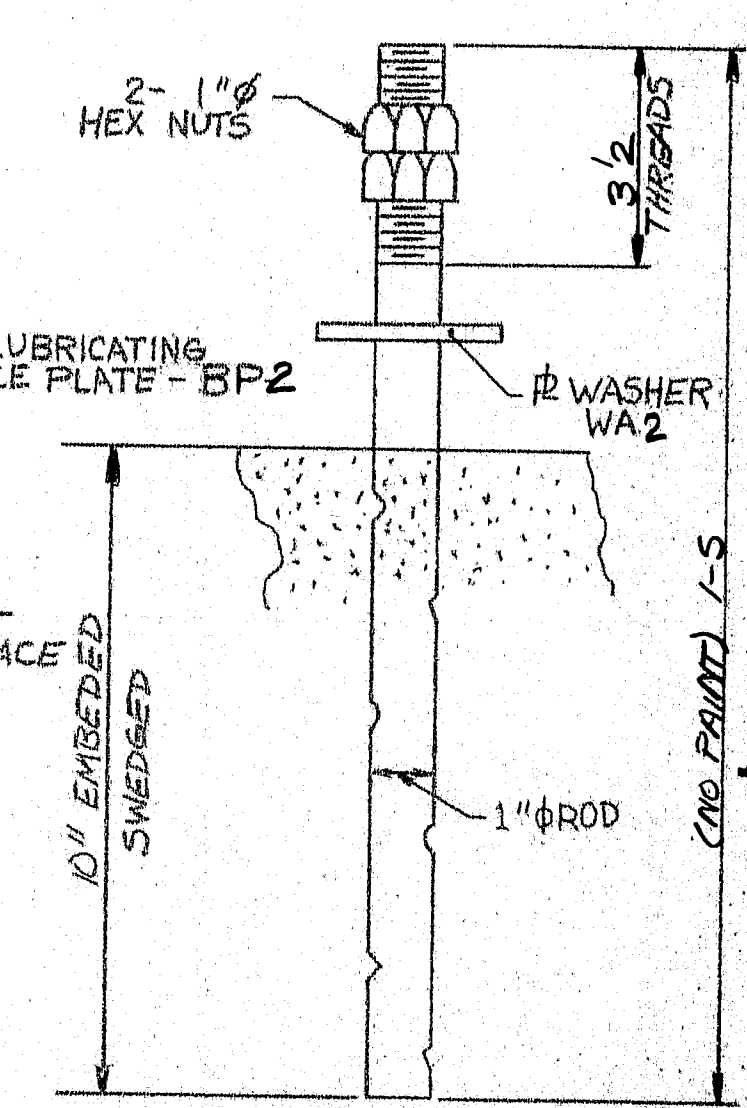
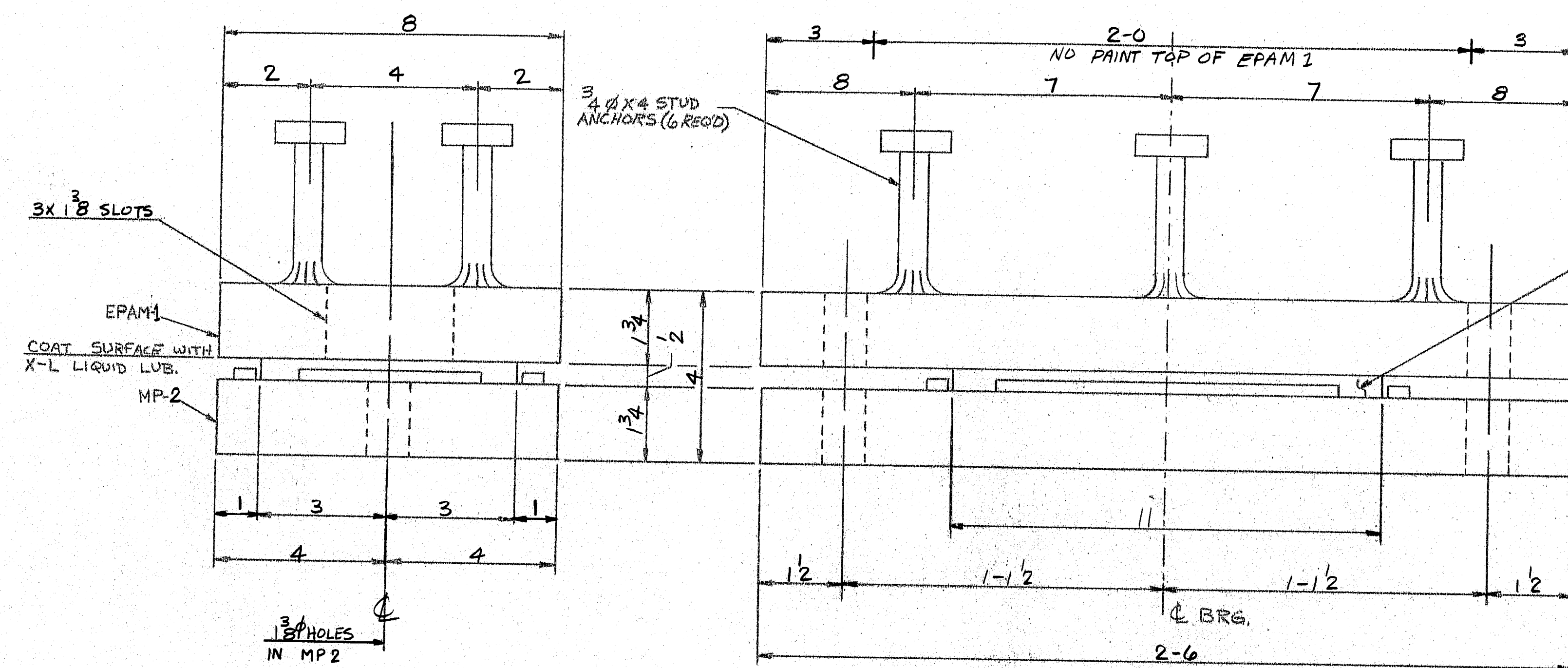
Technical drawing of a 1"  $\varnothing$  ROD. The drawing shows a vertical rod with a 10" EMBED SWEDGED section. The top section is 4" THICK and contains 2- 1"  $\varnothing$  HEX NUTS. A STD. WASHER is shown below the nuts. The rod is labeled 1"  $\varnothing$  ROD.

ANCHOR BOLT AB2  
12 - REQ'D

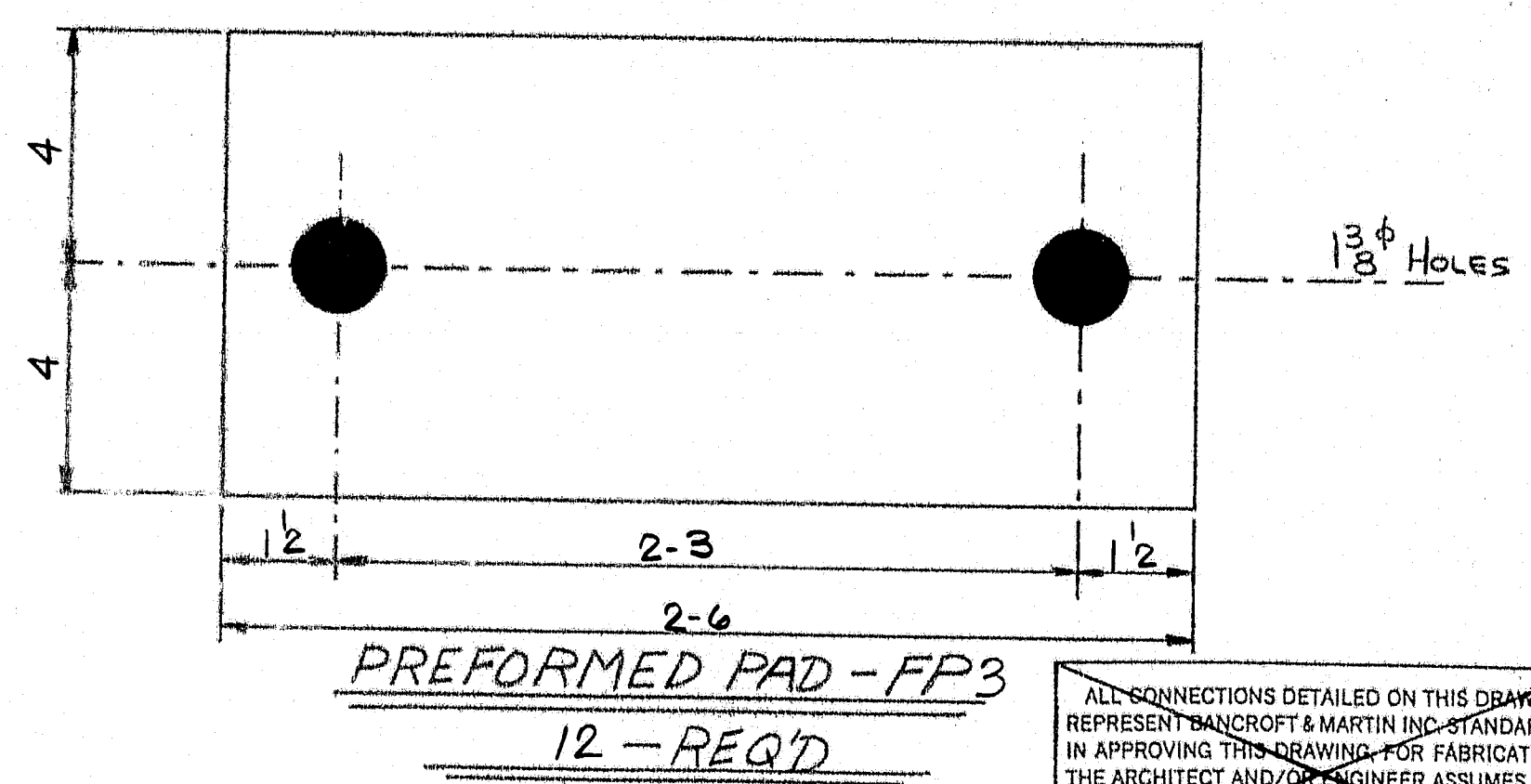
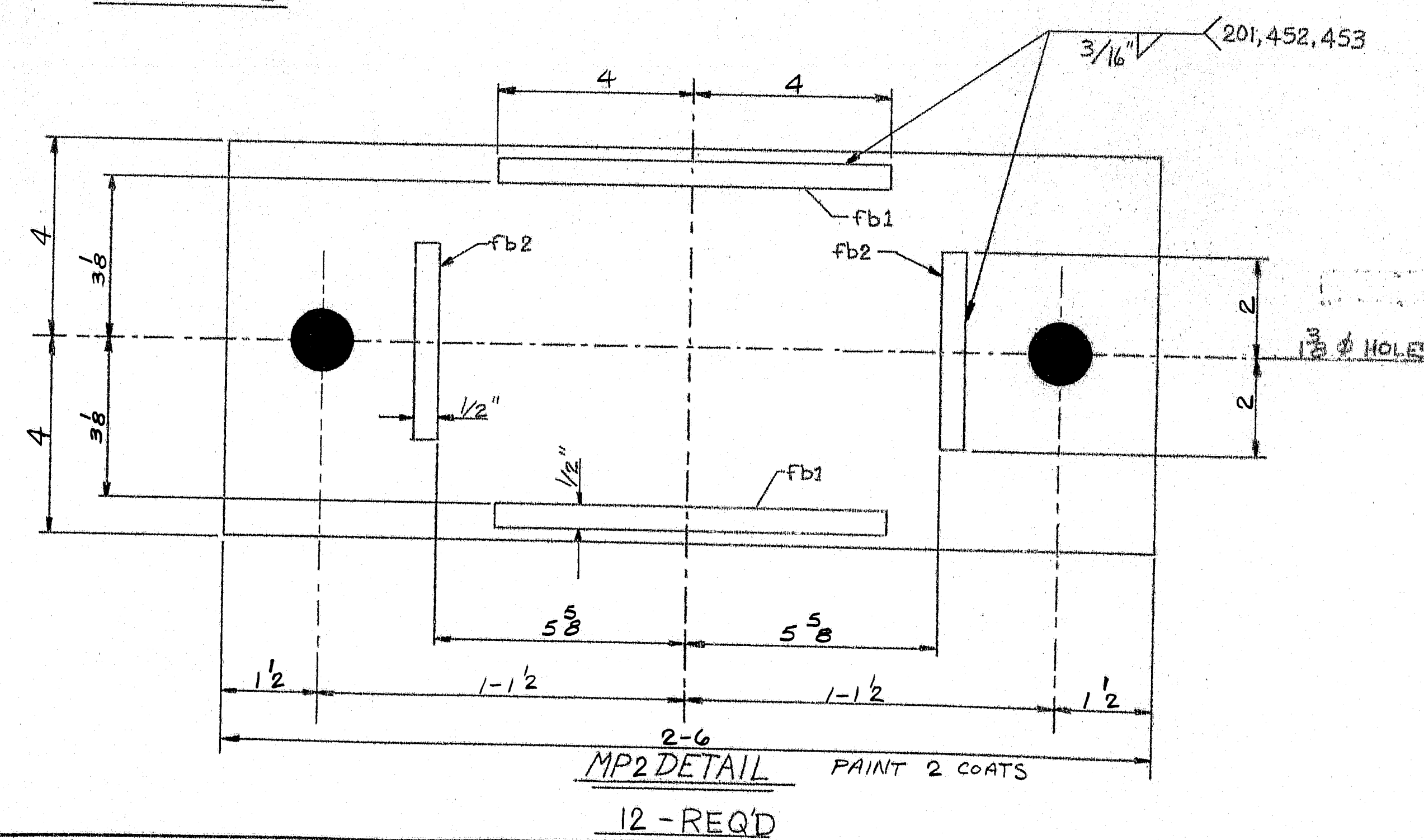
R95-57

SHIP					BILL OF MATERIAL		JOB NO.		DRAWING NO.		REV.
					5-39		51-2				
MARK	NO.	MARK	SHAPE	LENGTH	WT.	ITEM NO.	REMARKS				
FPBM1	6		PL 2 X 8	2 6	817	1/E	NP 108 1 C 20'0				
SP2	6		PL 2 X 6	1 8	408	1/F	NP 401/C 2 C 20'0				
	36	SHOP	3/4" STUD	0 4	22	1/B	A 108 <sup>STK.</sup> RES.				
	12	d1	ROD 1"Ø	0 1 1/2	4	1/G	NP 401/C 6 C 20'0 12'11" Bolt Cuts 5-10 1/2" 1/8"				
AB2	1/2		ROD 1"Ø	1 3	40	1/K	21/16" SWEDGED				
	24	SHOP	1" HEX NUTS		7	1/L	A 307 <sup>STK.</sup> RES.				
FIELD	12		1"Ø STD. WASHER		2	1/M	A 307 <sup>STK.</sup> RES.				
FP2	6		PAD 8 X 1/8	2 6		1/P	ME. IND. NO. 32035 PREFORMED PAD SPEC 713.03				
						1300#					
ITEM NO. 504.7002											
PROJECT NO. R6-295-31(02)50											
STEEL: ASTM A36 (un)											
WELDING ELECTRODE: NONE											
SHOP CONN.: NONE											
FIELD CONN.: BOLTED											
HOLES: AS NOTED											
PAINT:											
SPECIAL PAINT: LEAD SILICO CHROMATE ORANGE 4 MILS WFT.											
SPECIAL CLEANING: SSPC-SF6 PRIOR TO MACHINING											
BEARING PEDESTAL DETAILS -FPBM											
APP'D 1-10-86 PRINT DIST.				BANCROFT & MARTIN INC.							
3 11-27-85 APP.				27 MAIN STREET TEL. 207-799-8571							
8 1-15-86 FAB.				SO. PORTLAND, MAINE 04106							
25 1-13-86 F&F				PROJECT: BRIDGE OVER CNR							
0216 5-16-86 MDDT				STREET: PORTLAND, MAINE							
				CITY:							
				CUSTOMER: CALLAHAN BROS.							
				DESIGNER: WILBER SMITH & ASSOC.							
				ORDER NO. JOB NO. DRAWING NO. REV. NO.							
JCM 11-27-85 CHKD				5-39 51-2							
MS 11-25-85 DRAWN											





**EXPANSION PEDESTAL ASSEMBLY**  
**EPAM1 - 12 - REQ'D**  
 AT ABUTMENTS 1 & 2  
 BEAMS 1L, 2L, 3L, 15, 16, 17.



SHIP		BILL OF MATERIAL				JOB NO.		DRAWING NO.		REV.
						5-39		51-3		Δ
MARK	NO.	MARK	SHAPE	LENGTH		ITEM NO.	WT.	REMARKS		

**R95-58**

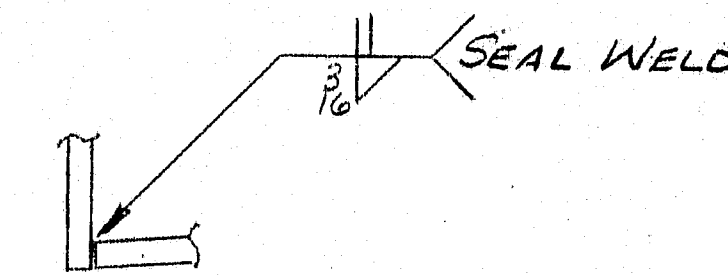
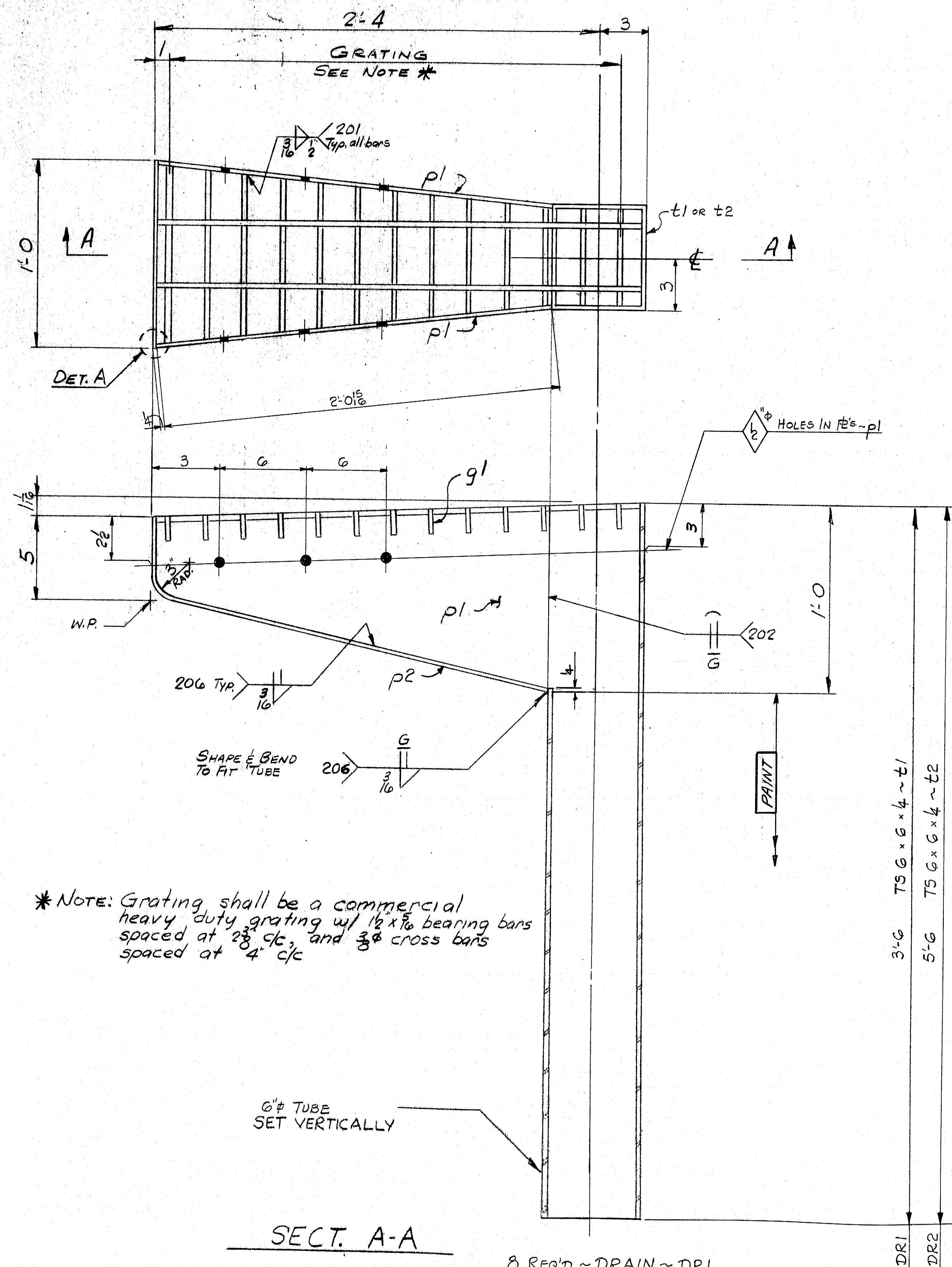










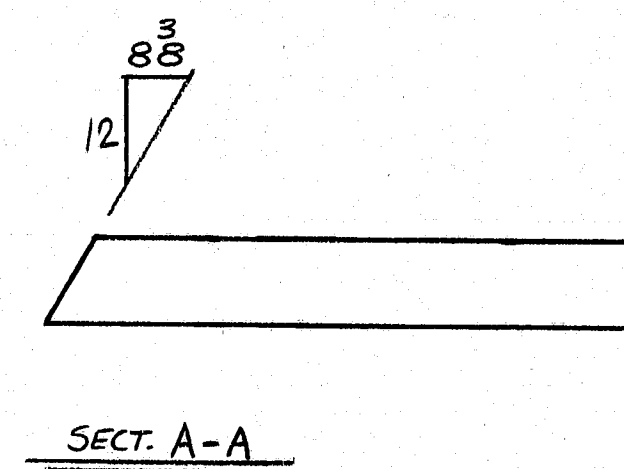
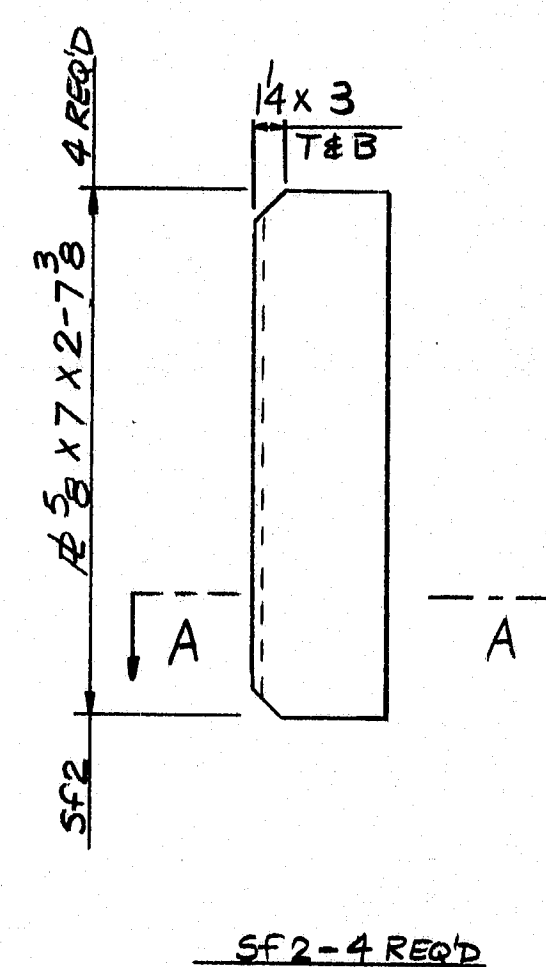
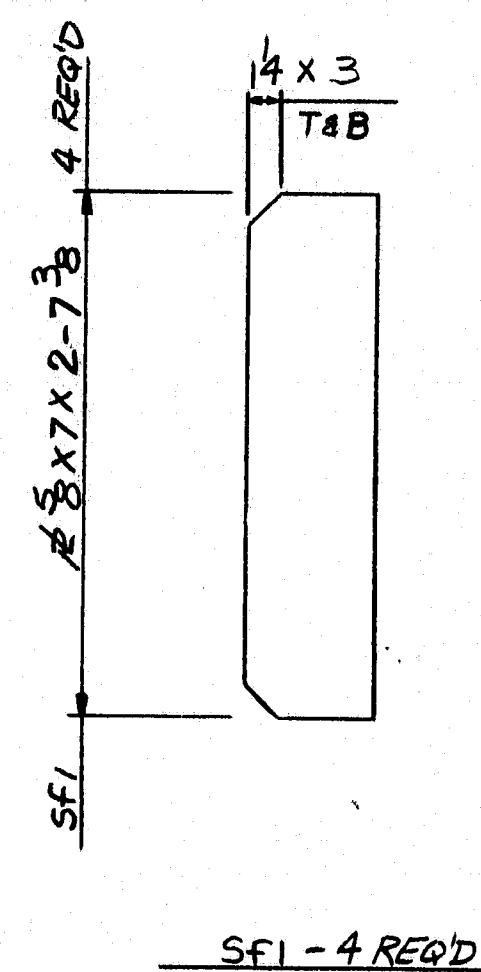
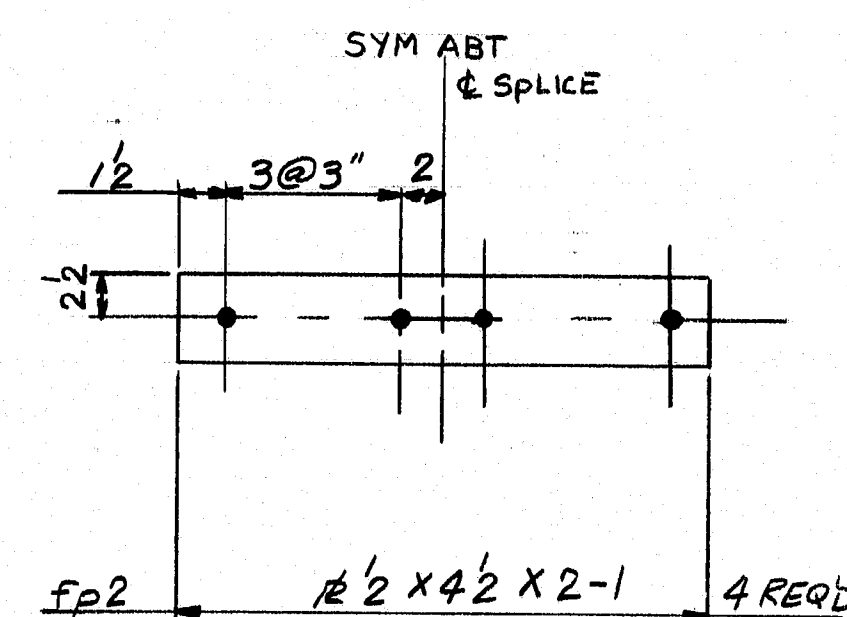
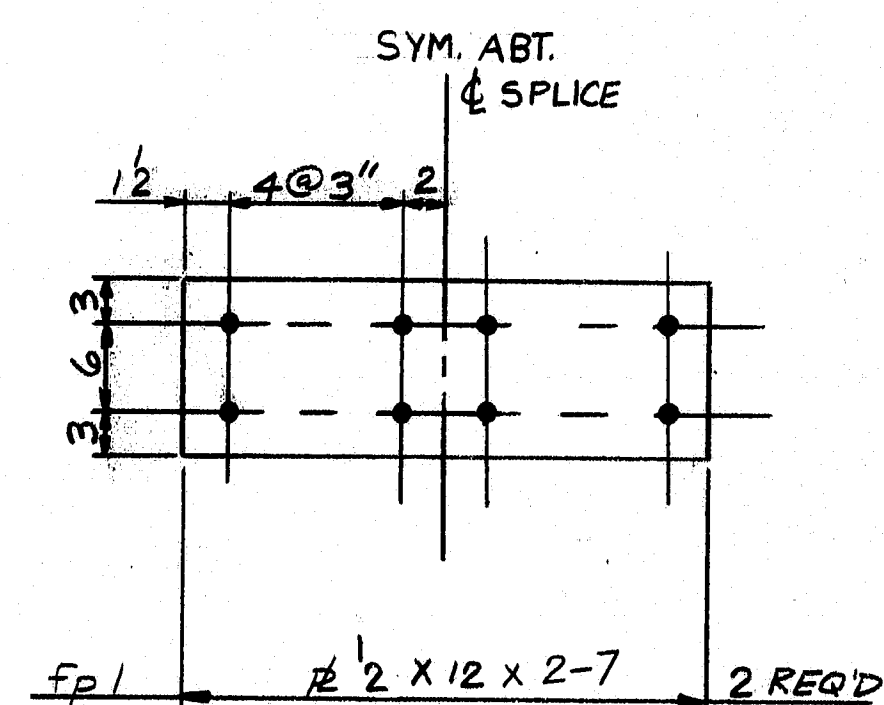
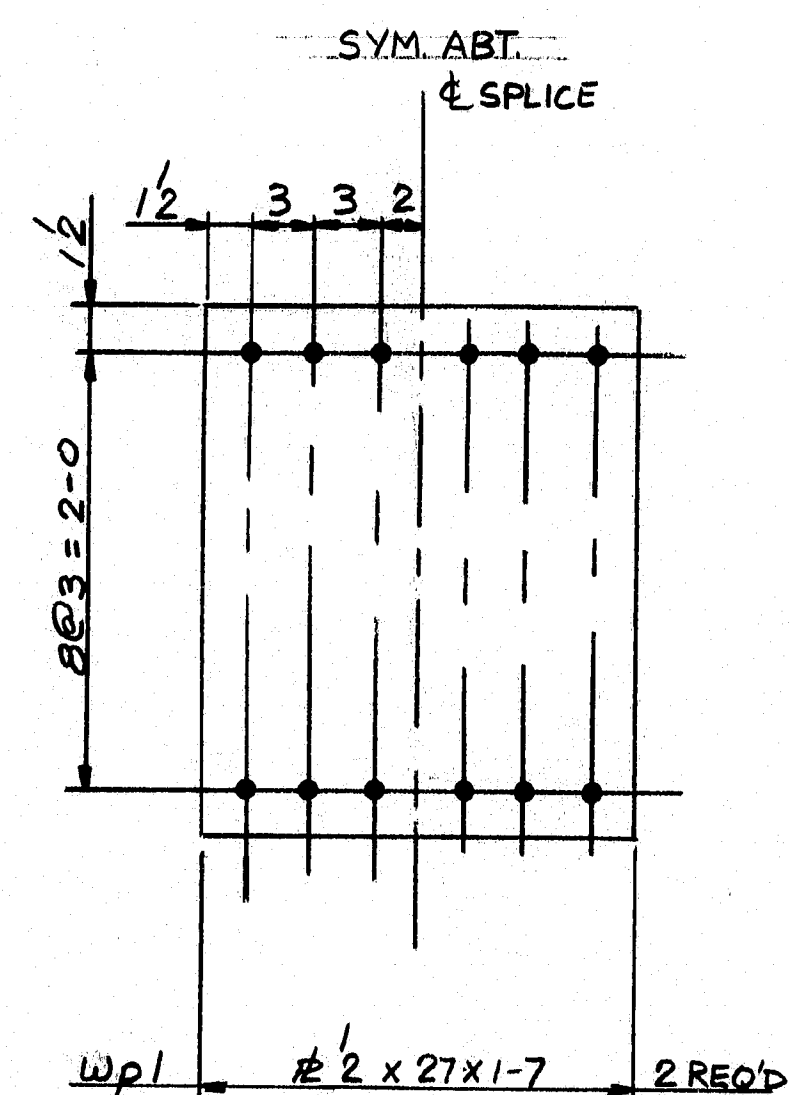


DETAIL - A

SHIP		BILL OF MATERIAL				JOB NO.		DRAWING NO.		REV.
						5-39		59-1		△
MARK	NO.	MARK	SHAPE	LENGTH	WT.	ITEM NO.	WT	REMARKS		
DR1	8		ASS'Y	-	-					
DR2	8		ASS'Y.	-	-					
	8	t1	TSG x 6 x 4	3	6	18.5 4 R 29.9 APPROX 8.2 100	1/2 M 533	ASB1 OR ASB00 (GR. A) DR1		
	8	t2	TSG x 6 x 4	5	6		2/0 837	t DR2		
	32	p1	R 4 x 12	2	0 15	NP 40536	3/8 M 679	L.O. & CUT		
	16	p2	R 4 x 12	2	6 1/2	2 1/2 9 1/2 x 12 0	2 L 408	L.O. & END CUT		
	16	g1	GRATING 12x	2	7	18.5 100 2 3/2 2025	2 G 464	12x12 BEARING BARS 3/4" C/C 3" C/C 12x12		
2721 #										

R95-61





# FIELD NOTES

1. SPLICE HOLES FOR MK. END OF BEAM TO BE FIELD DRILLED USING EXISTING SPLICE PLATES AS TEMPLATE.
2. SIGN SUPPORT CONNECTION PLATES TO BE PLAIN - FIELD TO SUPPLY CONNECTION.
3. DIAPHRAGM CONNECTION PLATE TO BE PLAIN - FIELD TO SUPPLY CONNECTION.
4. ALL HOLES TO BE SUBPUNCHED & REAMED OR DRILLED FROM SOLID

IT. NO.	BR. NO.	PROJ. NO. BH-0750 (4)
APPROVED: 1-8-86	<i>Bancroft &amp; Martin Inc.</i> South Portland, Maine 04106 JOB: WEST BROADWAY BRIDGE SO. PORTLAND, MAINE CUSTOMER: CALLAHAN BROS. DESIGNER: MAINE DEPT. OF TRANS.	
PRINT DIST.		
3 12-5-85 APP.		
8 1-13-86 FAB.		
25 1-8-86 F&F.	ORDER NO.	JOB NO.
	DRAWING NO.	REV.
CHECKED 11-27-85 JCM	WX-2662	55-1
DRAWN 11-22-85 M.S.		

R95-62